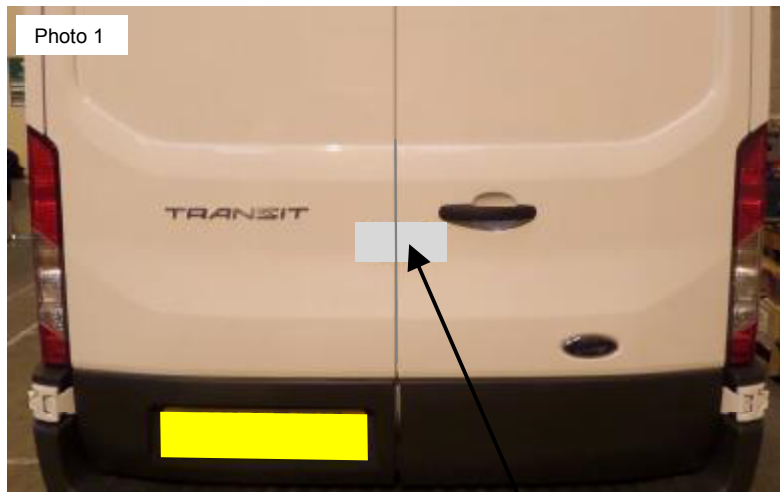
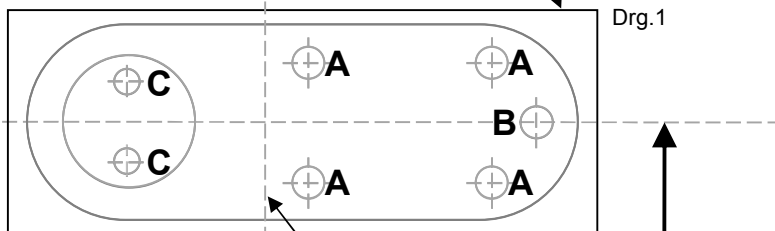


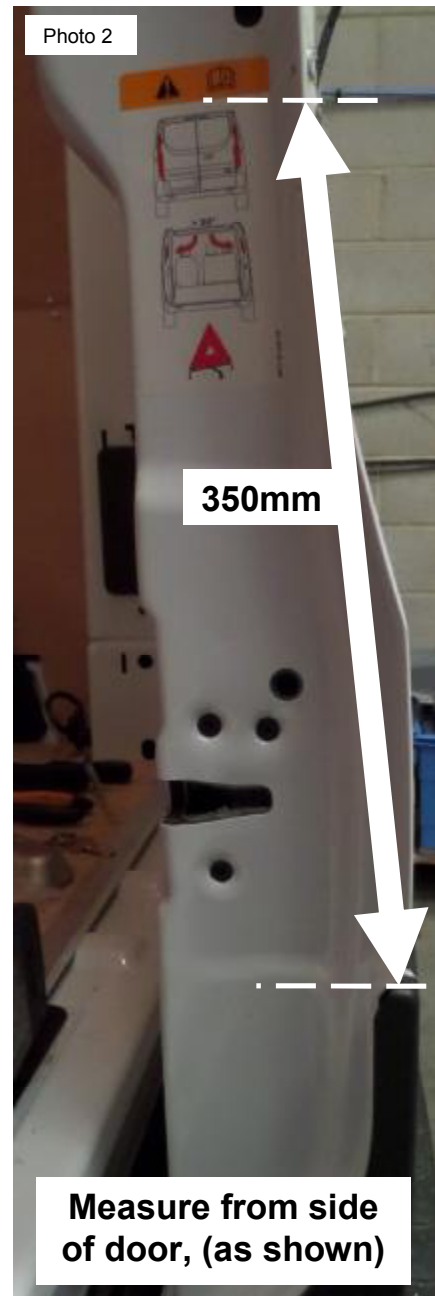
Issue 5 18/02/16

**ENSURE THAT THE VEHICLES O.E DOOR LATCH IS FUNCTIONING CORRECTLY. READ THE SUPPLIED INSTALLATION INSTRUCTIONS FULLY BEFORE COMMENCING ANY FITTING OF THIS LOCK.**

1. Remove any ply-lining (if fitted), from both rear doors.
2. Remove both lower panels using a suitable trim clip tool.
3. Clean area where lock will be fitted, and apply Masking Tape, (**see photo 1**).
4. Cut out paper template and attach to door, in line with measurements marked below.

**DRILLING TEMPLATE**Align vertical line to edge of **RIGHT** hand door

**350mm**  
(UP From **TOP** of door moulding, see photo 2)



Issue 5 18/02/16

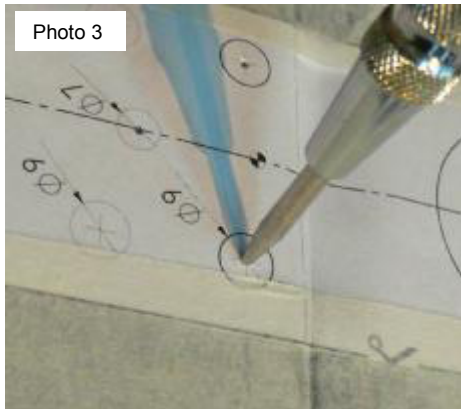


Photo 3

- Centre punch, Pilot holes **(A,B & C)**.
- Remove template.



Photo 4

- Drill 4 x holes **(A)** to a maximum size of **9mm**.
  - Drill 1 x hole **(B)** to a maximum size of **12mm**.
  - Drill 2 x holes **(C)** to a maximum size of **8mm**.
- Note: it will also be necessary to drill through the edge of an inner brace, when drilling holes (C).**

**(Note: All holes should be de-burred, where possible).**

- Remove Masking Tape, apply an anti-corrosion substance, such as 'Waxoyl' or paint holes.

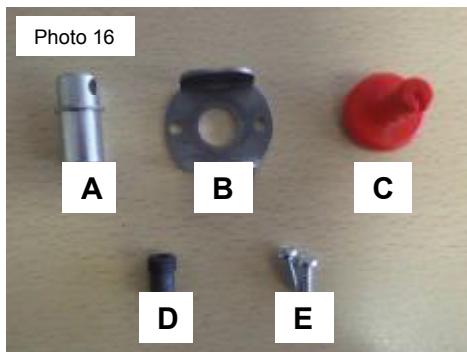


Photo 16

### Escape Cable Handle Components

**Remove the following:-**

- A.** Cable Collar.
- B.** Cable Collar Support Bracket.
- C.** Escape Knob.
- D.** Small Cable Adaptor.
- E.** Support Bracket Retaining Screws.

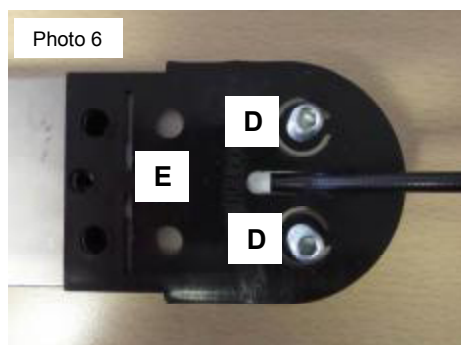
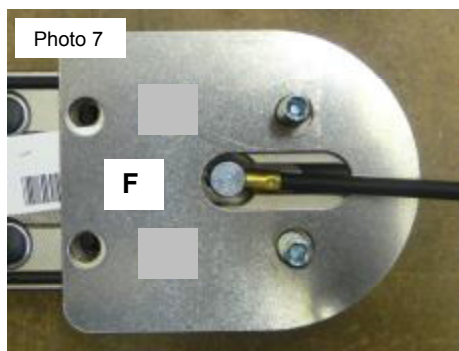


Photo 6

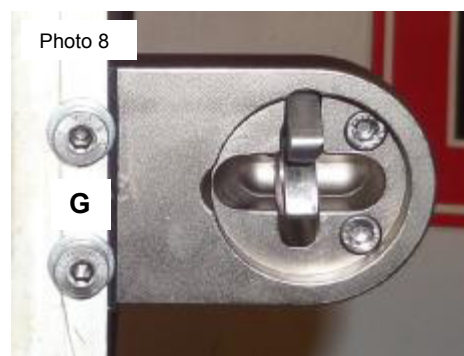
### Assemble Unit prior to fitting to door

- Fit 2 x **M8 Studs, (D)** (fit with socket heads facing inwards). **(Use of a thread locking compound is recommended).**
- Fit Plastic **Lock Shroud (E)** over Escape Cable and **Studs**.

Issue 5 18/02/16

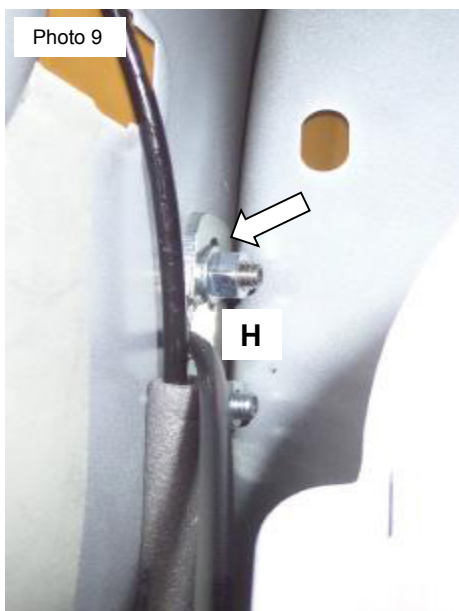


- Fit **External Mounting Plate, (F)**.
- Apply silicone to the rear of the **External Plate** before fitting.



### Fitting Gatelock Van to door

- Insert **Escape Cable** through hole **(B)**, followed by **M8 studs**.
- Hold unit, fit **M8 Cap Bolts** with **Lip Plate** through door edge **(G)**. **(DO NOT TIGHTEN FULLY)**.
- Fit Escape cable through centre slot of **Unit Backplate (H)**.
- Locate **Unit Backplate** over **Studs**, and hold in position.
- Position **Plate**, and locate **Nuts** onto **Studs**, **(DO NOT OVER TIGHTEN NUTS)**.

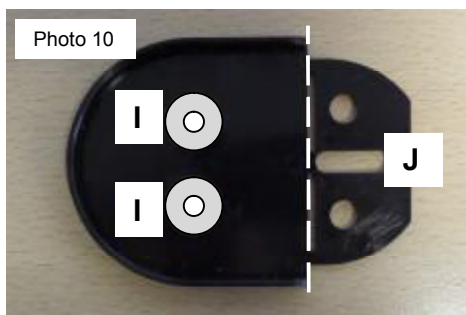


### Fitted Unit Backplate

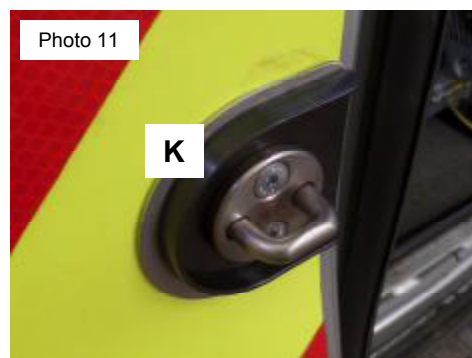
#### Caution:

Ensure upper latch cable is **NOT** under **Backplate** before tightening **Nuts**.

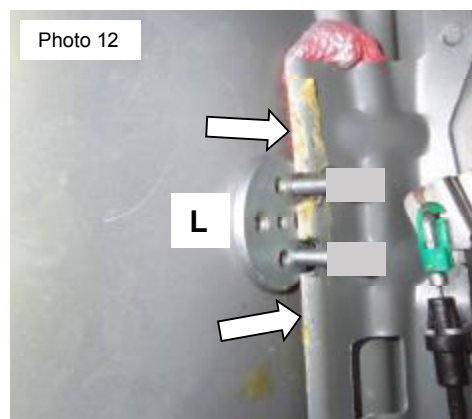
Issue 5 18/02/16



- Remove Plastic centres and fit supplied Washers (**I**) to Shroud.
- Remove Plastic 'Unit Tilt' section (**J**).

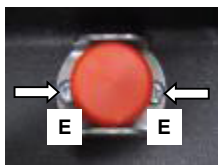
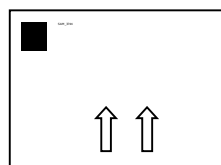
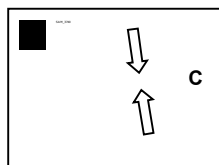
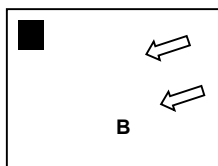
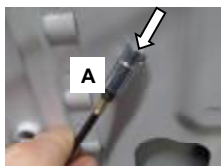


### Locking Strike Example



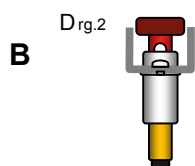
### Fitting Locking Strike

- Apply Silicone to REAR of **External Plate**.
- Fit **M6 Screws** through **Strike Plate (K)**.
- Fit Screws through **Plastic Shroud**, followed by **External Plate**.
- Slide **Strike Backplate (L)** up into position of externally drilled holes, inside door cavity, (see photo 12).  
(Note: it may be necessary to prise of some bonding to allow the Plate to fit in line with drilled holes).
- Fit **Screws** through drilled holes, and tighten.



### Internal Escape Cable Fitting, (Example)

- Choose a position on the inside face of the door that has adequate access to fit the cable through the door.  
(Ensure cable will not be kinked or interfere with latch etc.).
- Centre punch, drill 8mm hole.
- Proceed with handle assembling as shown in pictures



Issue 5 18/02/16

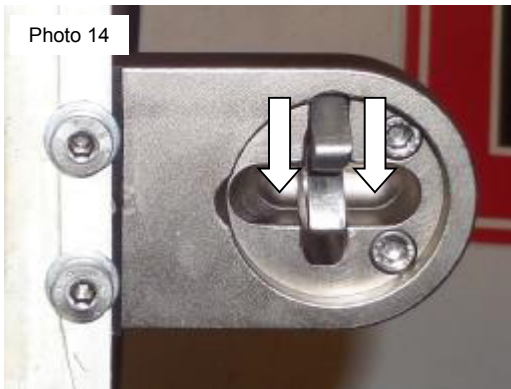
## Completion

5. Ensure **Unit** is level and tighten all fixings. Re-fit door panels etc.

## Testing - with door OPEN

6. Close Strike lever on **Unit**, Insert key to release, (see photo 14).
7. **CAREFULLY** close door onto **Strike Plate**, to ensure lever will engage, if adjustment of the **Strike Plate** is required, slightly loosen **Screws** and adjust as necessary.
8. Close Strike lever on **Unit**, test **Internal Escape Handle** to release.
9. Close door, which may require more force than normal, Use **Slamlock Key** to release Lock, and open door by vehicle handle.

**(Note: If a Deadlock Unit version is fitted, this allows the door to be used normally, and the Unit can be locked/unlocked manually).**



Fitted Lock