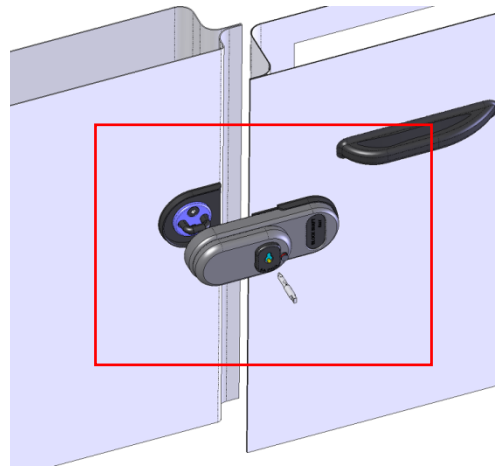




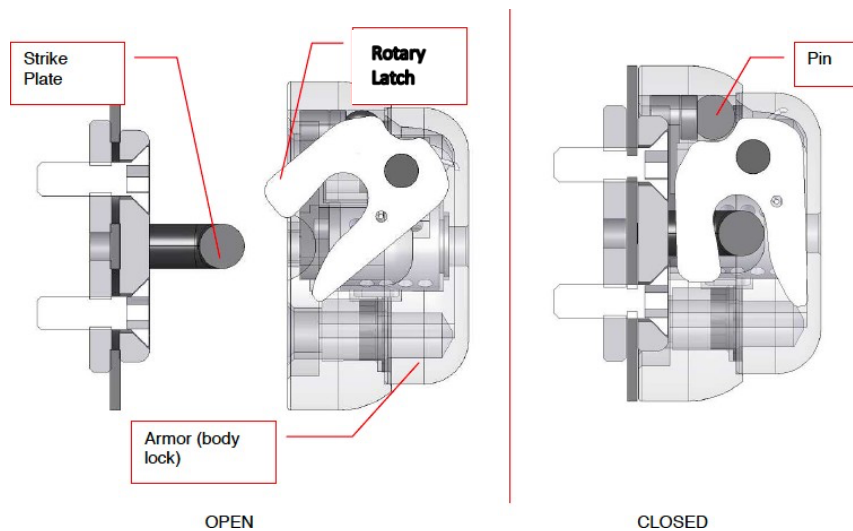
## Key Points

### 1) FITTED PERMANENTLY ON VEHICLE DOORS



The GVM “PRO” series is applied permanently on the doors of the Van (light commercial vehicles up to 5 tons) and is equipped with auto-locking and/or manual locking, thus facilitating the loading and unloading operations. The GVM PRO is equipped with the new & patented high security cylinder Netoma®, certified according to the European Standard UNI EN 1303 with more than 1 million theoretical combinations. The lock is available with Master key or key alike.

### 2) SLAM AND/OR DEADLOCKING OPERATION

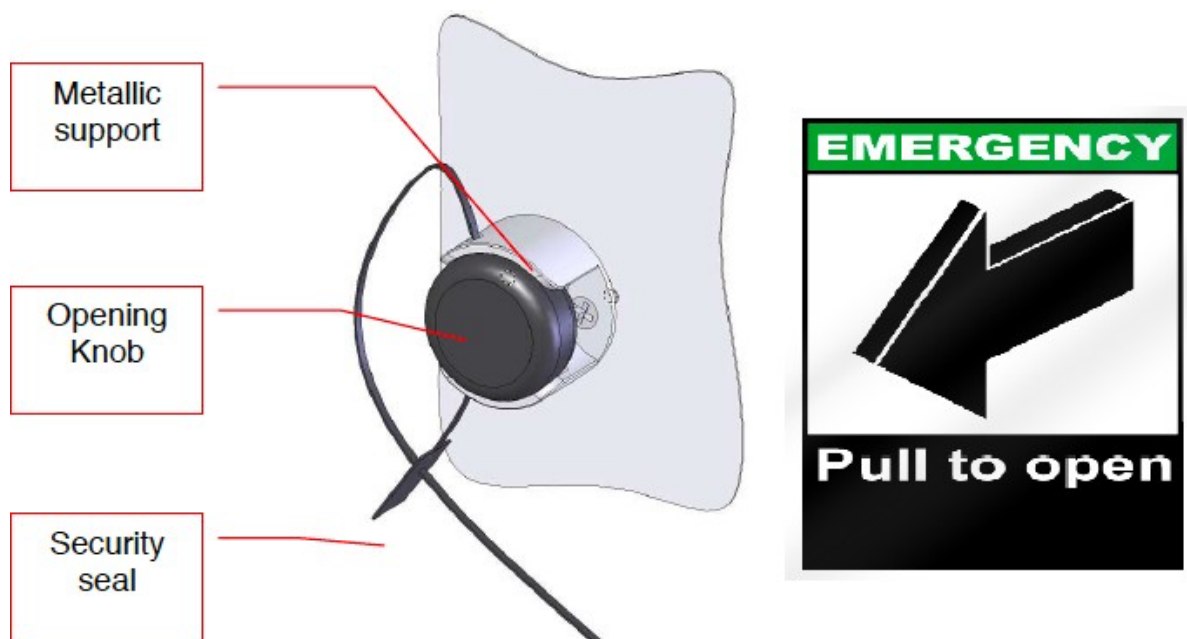


Use the key to open and just slam the door to close the lock and leave the loading area always protected. In case of Deadlocking Operation, the lock remains fitted to the door but it won't close each time the doors are closed. Only if the driver decide it.

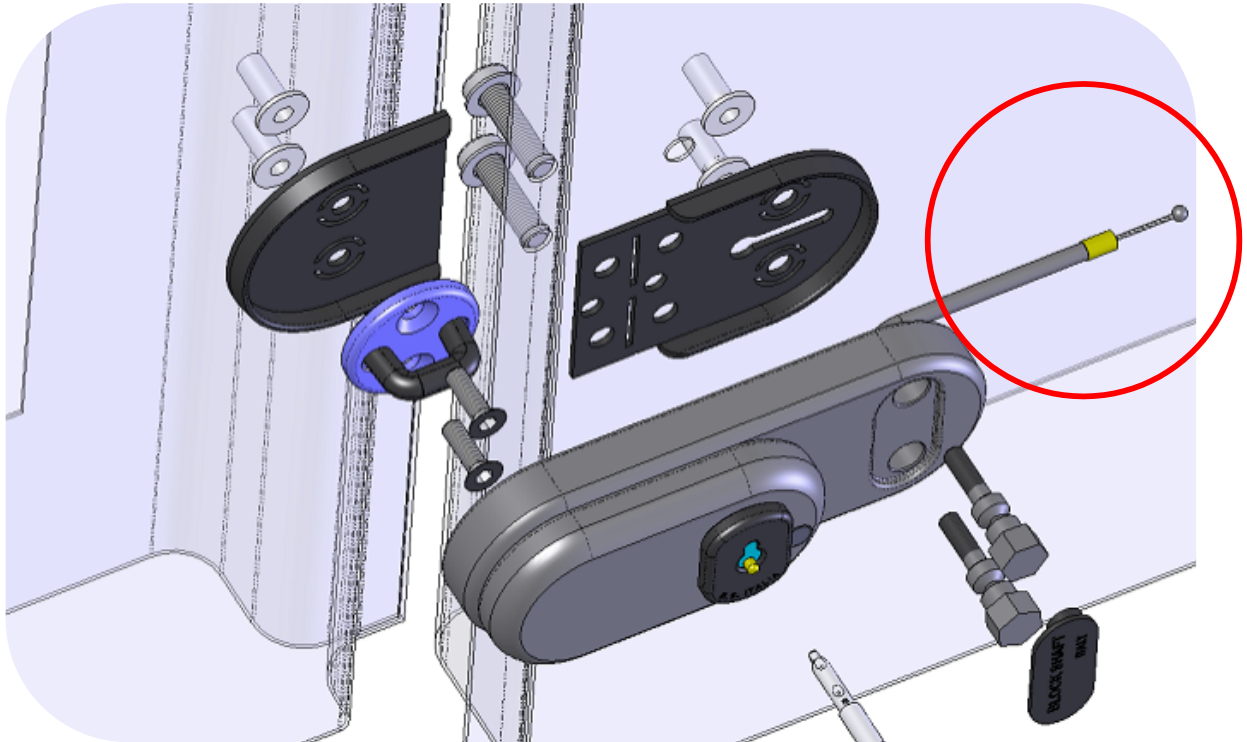
This rotary latch has several key points:

- Compact latch envelope and cross-section fits thin-profile doors, minimizes protrusion within the enclosure
- Forgiving mating tolerance accommodates misalignment and flexing of long door panels
- In the closed position, latch fully envelopes striker bolt for secure grip and protection
- All-metal construction for durable, long-lasting performance
- Hardened steel cams and triggers provide durable latching engagement
- Stainless steel styles for use in off-highway applications
- Corrosion-resistant finish minimizes danger of rust interfering with latch operation or staining door panel

### 3) EMERGENCY RELEASE CABLE

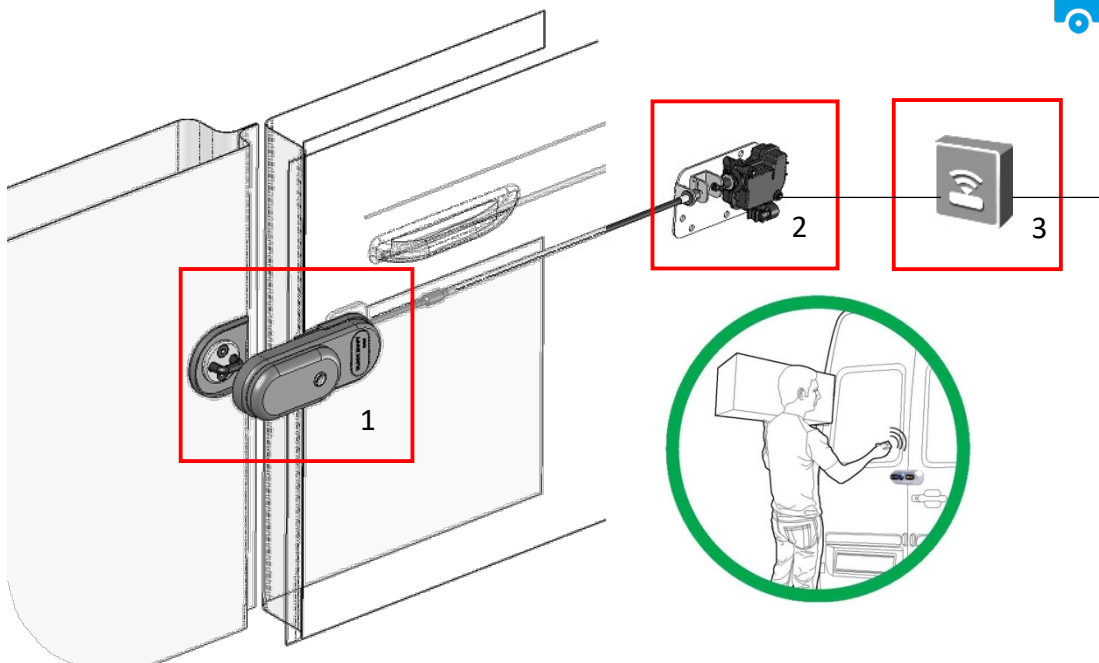


To comply with health & Safety regulations. Allows the driver to open the doors from inside the loading area in case unexpected closing.



In the event of attempted theft by cutting the sheet metal of the vehicle, GATELOCK VAN has foreseen the use of a sheathed emergency cable to avoid possible hooks and pulls that could cause the doors to open from inside the load compartment.

#### 4) GPS SATELLITE CONNECTION TO LOCK



The padlock with electromechanical drive consists of the following components:

1. The padlock body with cable;

2. Servomechanism;
3. Control unit (12V) + 2 remote controls.

Once the command has been received, the control unit supplies the linear actuator (positioned inside the door) that retracts and calls the latch through the cable connected to the lock. In this way, the lock opens and the door is unlocked.

After a few seconds from the activation, the control unit feeds the actuator in reverse direction releasing the latch that, under the action of its own spring, is ready to return to the locking position.

The lock remains open until the tailgate is open; as soon as the tailgate is closed, the lock automatically closes.

It can be fitted on the back door or/and the sliding side door

## 5) LOCK & CYLINDER CERTIFICATION – GPS CONNECTION TO LOCK – TAPA MEMBER



GATELOCK VAN is the only security lock for commercial vehicles worldwide to have obtained the “GOLD” certification through SOLD SECURE UK (Locksmiths Associations).

An ELECTRIFICATION KIT is supplied as an accessory to allow the lock to be controlled by a satellite GPS alarm.

Finally, the cylinder named NETOMA° used inside the lock has been patented by Block Shaft Group and certified through ISTITUTO GIORDANO (Italy) according to UNI E1303 with the highest level of security (Level 6) due to its theoretical combinations.

